



COMPANY PROFILE



jist

Industrial Co. Ltd.

 www.jistgroup.com.bd



Md. Shohidul Bari

Managing Director

With over 19 years of experience in the garments and garment accessories sector, we have firmly established ourselves as industry leaders.



Md. Abdulla Al Mamun

Chairman

We invite you to experience the seamless integration of quality, customization, and reliability as we work together to bring your visions to life.

INTRO



We are a leading Trims & Accessories
Manufacturing Company from Bangladesh.

Index

- Introduction
- Index
- Who We Are
- What We Do
- Our Values
- Milestones
- Our Products
- Facilities
- How we work
- Our Process
- Board of Directors
- Contact



Who We Are

ABOUT
US



Jist Industrial Co. Ltd.

Established in 2005, Jist Industrial Co. Ltd. stands as a distinguished subsidiary of the esteemed Jist Group. Nestled in the heart of Bangladesh, we have become a cornerstone in the accessories manufacturing industry, earning a reputation synonymous with quality and reliability.

We have emerged as the preferred choice for renowned fashion brands globally. Our commitment to delivering exceptional quality, innovative solutions, and a seamless customer experience has positioned us as a trusted partner in the dynamic and competitive fashion landscape.

Building enduring relationships with our clients is paramount to our ethos. We prioritize customer satisfaction by actively engaging with our clients, understanding their unique needs, and delivering customized solutions. Our client-centric approach has played a pivotal role in fostering trust and loyalty.

Jist Industrial Co. Ltd. is not merely a manufacturer; we are a reliable partner dedicated to enhancing the success of our clients.

As we continue our journey, we remain steadfast in our pursuit of excellence, guided by the principles that have defined our identity in the industry.



ABOUT
US

What We Do

Our expertise lies in the meticulous production of high-quality accessories tailored for the garments industry. From intricate embellishments to essential garment components, we take pride in crafting products that meet and exceed the stringent standards set by leading fashion brands worldwide.

Innovation

Our dedicated team stays abreast of the latest industry trends, pushing boundaries and introducing novel ideas to stay ahead of the curve. We ensure that our clients receive products that not only meet current demands but also anticipate future market needs.

Excellence

At the core of our operations is a commitment to excellence. From the inception of an idea to the final product, we ensure that every step in our manufacturing process reflects the highest standards.



Our Values

We're more than just accessories. We're dedicated to values that define who we are.

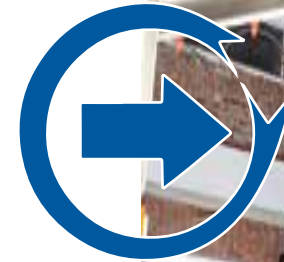
We prioritize fair labor practices and workers' rights across our supply chain. Our commitment to the planet drives us to use sustainable materials and responsible manufacturing practices. We create products built to withstand wear and tear. Why? Because we believe in less frequent replacements and reduced waste.

Transparency is at our core. We provide clear information about our sourcing, production processes, and their social and environmental impact.



Vision

We aim to lead the fashion industry globally, by delivering premium-quality accessories and a relentless staying ahead of industry trends.



Mission

We know that great things happen when we work together. Whether it's with our incredible team or our valued partners, collaboration fuels our innovation and success.



Milestones

2005

Company establishment of garments accessories in local market.

2008

Started foreign trading business internationally (Hong-Kong, China, Sri Lanka, Vietnam, Saudi Arab, Qatar).

2011

2200sqft of rented land area.

2017

It became 10.000sqft of rented land area and the number of production machines was doubled.

2018

Purchased of 70.000sqft land area.

2025

Expanded 50,000 sqft, Total upto 120,000 sqft Land area with a Yearly Revenue of \$10m



Motivation of Marketing

We do provide clear direction, competitive advantage, and sustainable growth by aligning all marketing efforts with core business goals, ensuring efficient resource use, deeply understanding customer needs, and allowing agility in a changing market, ultimately building stronger customer loyalty and brand equity.

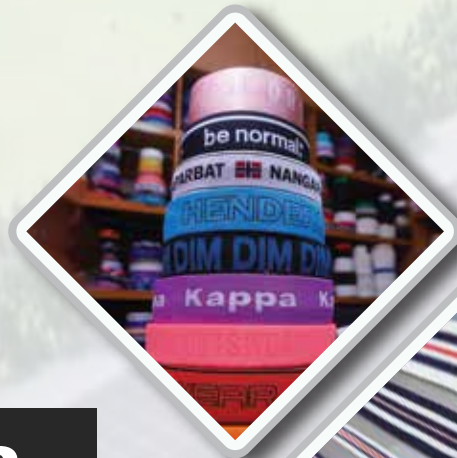
We mainly focus on quality control, inventory management, inspection, testing, and documentation



-  Competitive Price
-  Quality Maintenance
-  Ontime Delivery
-  Shorter production

Our Products

- > Jacquard elastic
- > Needle Loom elastic
- > Crochet elastic
- > Rib Tape
- > Draw cord & Drawstring
- > Printed Fabric Label
- > Offset items
- > Poly bags (PP/LDPE/PVC/Biodegradable/HDPE)
- > Screen print
- > Heat Seal
- > Rubber Thread
- > Woven Label



OUR PRODUCTS

Jacquard

We offer wide range of Jacquard Elastic and Jacquard Tape products. They find extensive applications in diverse clothing items, including sportswear, lingerie, and medical garments, ensuring a comfortable and secure fit. Their uniqueness lies in the diversity of lettering and patterns, making your product truly one-of-a-kind

**NUMBER OF MACHINES:
19 SETS**

**PRODUCTION
CAPACITY:
650,000 MTR/MONTH**



Jacquard Elastic maintain elasticity over an extended period of use. They do not change shape and quickly return to their original length after stretching. They are resistant to high temperatures.



OUR PRODUCTS

Needle Loom

Woven Elastic, Woven Tape and Twill Tape offered in a variety of widths, thicknesses, and colors to match your needs

**NUMBER OF MACHINES:
40 SETS**

**PRODUCTION
CAPACITY:
1,430,000 MTR/MONTH**



Woven Elastic offers reliable stretch and recovery for waistbands, cuffs, and sleeves, it delivers the flexibility and strength.

Woven Tape and Twill Tape it's known for versatility, durability and are used to reinforce seams, bind edges, adaptable for crafting, sewing, and garment construction.

OUR PRODUCTS

Crochet

Knit Elastic retains shape and stays flat when stretched. It is a quality, lightweight and versatile elastic for use with all types of fabrics. We can custom your Knit Elastic in a variety of colors and sizes. Good for waistbands, legbands, sleeves and more.

**NUMBER OF MACHINES:
23 SETS**

**PRODUCTION
CAPACITY:
650,000 MTR/MONTH**



When it comes to kid's clothing, we have the perfect solution. Such as button-hole elastic which creates an adjustable waist for kid's who can't yet use a belt well, cinching up the elastic on the inside of the pants as needed is the best thing.

OUR PRODUCTS

Drawcord & Drawstring

We offer high-quality Drawstring and Drawcord with tipping products commonly used in clothing and accessories to cinch or tighten openings such as activewear, loungewear, outerwear, and bags

**NUMBER OF MACHINES:
28 SETS**

**PRODUCTION
CAPACITY:
1,040,000 MTR/MONTH**



Crafted from premium materials, including cotton, polyester, and nylon, our products offer a perfect blend of durability and style. Choose from an extensive array of colors and personalize your drawstrings with various tipping options, including sleek metal, lightweight plastic, or modern silicone.

OUR PRODUCTS

Rubber Threads

Highly elastic, designed to be durable and withstand repeated stretching. Used in the production of all our elastic products by Rubber Covering Machine. They are available in a variety of colors to match or contrast with the fabric they are being used with.

**NUMBER OF MACHINES:
3 SETS**

**PRODUCTION
CAPACITY:
10,400 LBS/MONTH**



Rubber Covering Machine is used for single covered or double covered apply on spandex as the core yarn, polyester, nylon, cotton as covered yarn

OUR PRODUCTS

Rib Tape

Strips of fabric, with a ribbed texture. These can be used for various purposes, including decorative trims, reinforcing seams, or binding edges. Might be used decoratively or functionally in garment construction.

**NUMBER OF MACHINES:
2 SETS**

**PRODUCTION
CAPACITY:
26,000 MTR/MONTH**



We can personalize Rib Tape with your unique print. We do print in our Screen-Printing Unit - technique that involves using a mesh screen to transfer ink onto a fabric.

OUR PRODUCTS

Offset Items

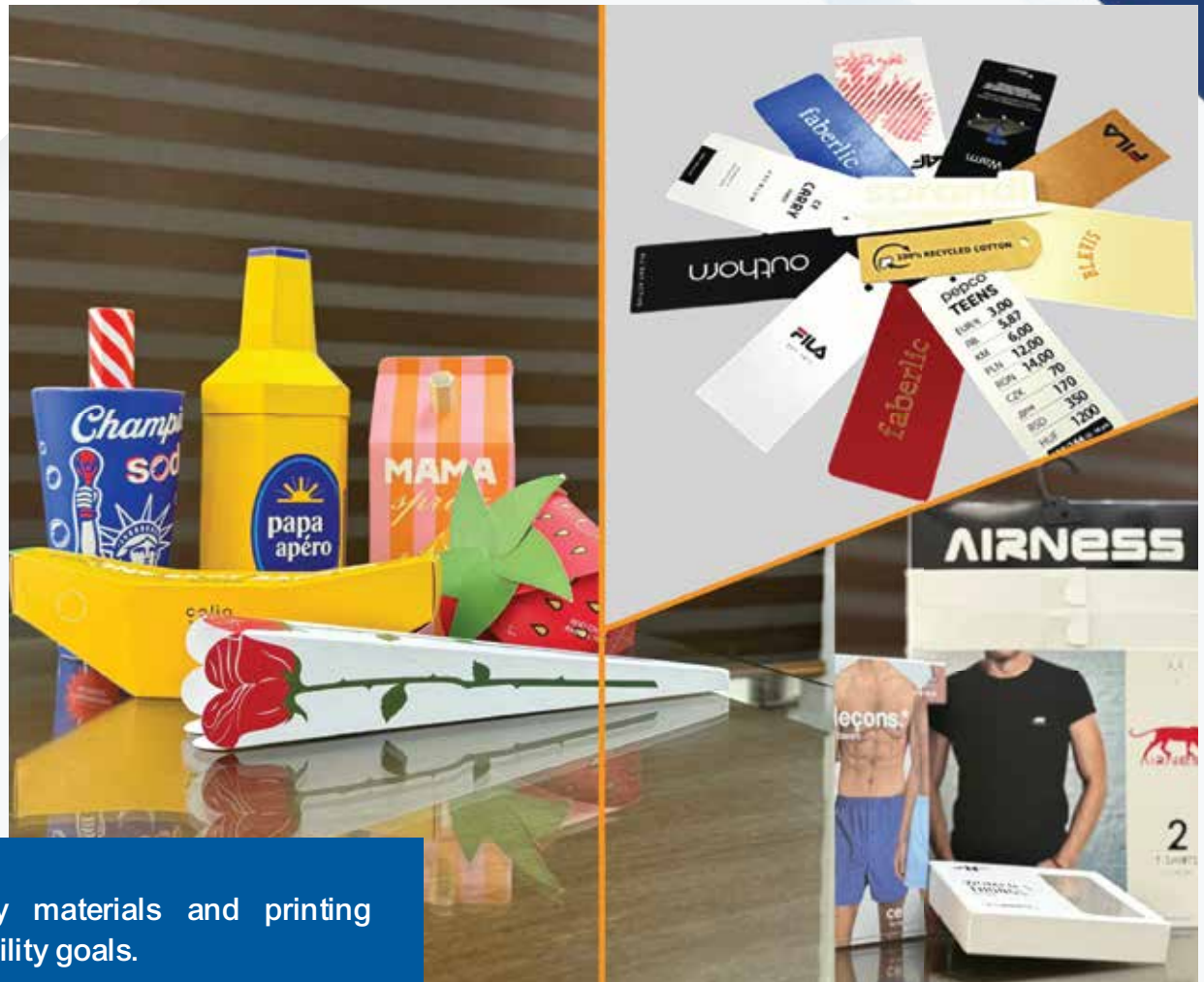
We produce all kinds of Hangtags and Paper Boxes, when thoughtfully designed, contribute to a positive customer experience and help convey important information about the product and the brand. They are an integral part of the overall packaging and branding strategy for many retail products.

**NUMBER OF MACHINES:
5 SETS**

**PRODUCTION
CAPACITY:
6,500,000 PCS/MONTH**



We also provide eco-friendly materials and printing methods to align with sustainability goals.



OUR PRODUCTS

Printed Labels

We offer a wide range of Printed Labels, including taffeta, satin, and cotton labels. Labels can be customized into various shapes to suit the design or product. Variable printing data allows for unique information on each label, such as serial numbers or QR codes.

**NUMBER OF MACHINES:
5 SETS**

**PRODUCTION
CAPACITY:
13,000,000PCS/MONTH**



Labels play a crucial role in marketing, branding, and providing essential information to consumers. The choice of printing method, materials, and finishes depends on the specific requirements of the product and the desired visual appeal.

OUR PRODUCTS

Polybags

We deliver high-quality Poly tailored to the individual needs:

- Polyethylene, including:
LDPE (Low-Density Polyethylene),
HDPE (High-Density Polyethylene).
- Polypropylene
- Biodegradable and Compostable
- P.V.C.
- Printing coatings
- Recycled options

**NUMBER OF MACHINES:
6 SETS (Regular Poly)**

**PRODUCTION
CAPACITY:
3,120,000 PCS/MONTH**

20 SETS (PVC Poly)

**PRODUCTION
CAPACITY:
780,000 PCS/MONTH**



Providing cost-effective and essential protection for clothing from the factory floor to the end consumer. This includes safeguarding garments from dust, dirt, moisture, and physical damage during transportation and storage.



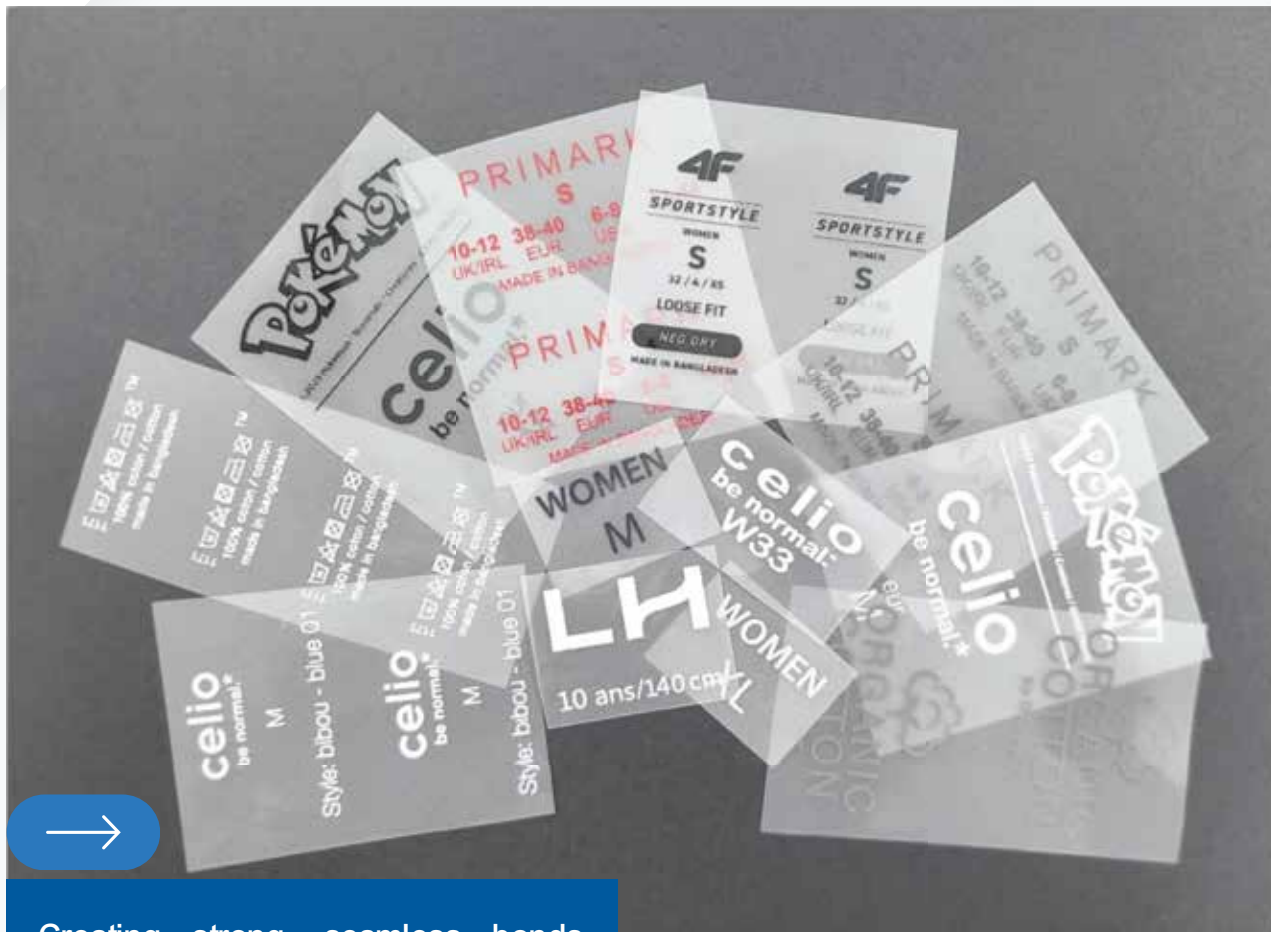
OUR PRODUCTS

Heat Seal

A textile treatment for synthetic fabrics (like polyester, nylon) that uses heat and tension to stabilize the fibers, giving them dimensional stability (preventing shrinkage), crease resistance, and shape retention, typically done on a stenter machine with high temperatures (150-220°C) before cooling to lock in the new structure.

**NUMBER OF MACHINES:
3 SETS**

**PRODUCTION
CAPACITY:
2,500,000 PCS/MONTH**



Creating strong, seamless bonds, replacing stitch for enhanced durability, comfort, and performance.

OUR PRODUCTS

Screen Print

Transfers a design onto a surface (like fabric or paper) using a mesh screen with a stencil, pushing ink through open areas with a squeegee. The process involves creating the stencil by coating a screen with light-sensitive emulsion, exposing it with a design-positive transparency to harden the emulsion (blocking ink where it's dark), washing out the design, then applying ink and using a squeegee to print the image.

**NUMBER OF MACHINES:
4 SETS**

**PRODUCTION
CAPACITY:
312,000 MTR/MONTH**



A cost-effective, versatile, and high-quality method for producing a wide range of apparel, particularly for large-volume orders and durable, vibrant designs.

OUR PRODUCTS

Woven Label

Designing the artwork, digitising it for a loom, selecting thread colours (often polyester or cotton), and then using a high-speed loom (like jacquard or rapier) to interlace warp and weft yarns to form the design, creating a durable fabric tape that's then cut, folded (e.g., centerfold, endfold), and heat-sealed to prevent fraying before quality checks



Boosting brand identity, providing essential product information (size, care, material) legibly through durability, enhancing perceived quality and value, and acting as long-lasting marketing tools that build consumer trust and recognition, unlike tags that get removed.

OUR PRODUCTS

Metal & Other Items

Trims can be functional or decorative and are often an essential part of the overall design and functionality of a product. We source various materials and components in our China offices. All kinds of Pullers, Buttons, Zippers, Snaps, Hooks, and Eyes, Patches and more.



Hong Kong Office: Flat- F, 5/Floor, Man On Building 282-290 Lai Chi Kok Road Sham Sui Po, Kowloon, Hong Kong. Tel: +852 64331062.

China Office: Room 927, Zhujiang International Mansion, No. 88-90, Diejing Middle Road, Haizhu District, Guangzhou City post code 510220. Mobile +8618520023202/18565018557

Facilities



**120,000 sft
Factory Area**



**270
Employees**



**12,000 sft
Bonded Warehouse**





Our work begins with a collaborative approach. We engage closely with our clients to understand their specific requirements, preferences, and goals. Whether it's a new design concept or a tailored solution, we believe in transparent communication to ensure that we are aligned with our clients' visions. Our state-of-the-art production facilities are equipped with the latest technology, enabling efficient and scalable manufacturing. Our skilled workforce, coupled with automated processes, ensures that we can meet the demands of even the most intricate and large-scale projects while maintaining the utmost precision.

We are
Certified by..



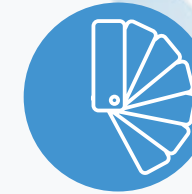
www.jistgroup.com.bd

Our Process



Submit Requirements

Initiate the process by sending project specifications and requirements.



Sample Creation

Initiate the process by sending project specifications and requirements.



Production

Both parties confirm agreement on quality, pricing, and terms of payment, then main production process begins.



Quality Control

Quality control checks are conducted at each stage of the production process, so the final product meets the agreed-upon standards.



Shipping and Delivery

The finished goods are prepared for shipment. Products are shipped out promptly to the client's specified location.

Easy-step guide how we process our production.





The brands who trust us....

celio
be normal.*

FILA

4F



PRIMARK®

pepco®

J. Crew

Kmart
Australia




GERRY WEBER

**ULLA
POPKEN**



www.jistgroup.com.bd

THANK YOU

CONTACT INFORMATION:



+ 8 8 0 2 5 5 0 8 6 9 3 8

+ 8 8 0 2 5 5 0 8 6 9 3 9

info@jistgroup.com.bd

www.jistgroup.com.bd



Corporate Office: House-05, (1st, 2nd & 3rd Floor), Road: 17/A,
Sector- 12, Uttara Model Town, Dhaka-1230

Factory: Durlovpur, Charbahar, Post: Sathkamair, Sreepur, Gazipur-1744

Hong Kong Office: Flat- F, 5/Floor, Man On Building 282-290 Lai Chi Kok
Road Sham Sui Po, Kowloon, Hong Kong. Tel: +852 64331062.

China Office: Room 927, Zhujiang International Mansion, No. 88-90,
Diejing Middle Road, Haizhu District, Guangzhou City post code 510220.
Mobile +8618520023202/18565018557

Europ Office: Lembosstraat 5, 9506 Geraardsbergen, Belgium.



Stay In Touch